

Yealink New Version V85



More endpoints supported on T5 Series Phone with DD10K



Up to 10-way Conference



Quicker Booting



More Bluetooth Devices Supported



Uniformed Firmware



Key Feature Enhancements

01 More Endpoints Supported on T5 Series Phone with DD10K

Corded-Cordless phone feature is one of the most creative features of the Yealink T5 Series phone. When connecting a DECT USB dongle DD10K to a T5 phone, the T5 can be turned into a DECT base station to carry 4 handsets.

CP930W and DD10K (DECT USB Dongle) now support Corded-Cordless phone feature on the V85 version. The DD10K can be used in two ways. When connecting to a T5 phone, they work as a base; when connecting to a T41S/T42S phone, it works as a handset.



02 Up to 10-way Conferencing Supported

The T5 Series phone can now support up to 10-party video/audio mixed conferencing, with up to 2 video calls included. T53/T53W can support up to 5-way conferencing.



Up to 10-way video/audio mixed conferencing (up to 2 video calls)



Up to 5-way conferencing

Supported model: T5 Series

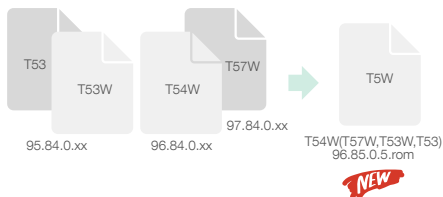
03 Quicker Boot-up Time

Yealink phone is well known by the market for its fast reactions and quick booting. On V85 version, users can experience significant enhancement when booting up the devices, especially on T4 series phones.



* See boot-up time upgrade at the end.

04 Uniformed Firmware for T53/T53W/ T54W/T57W



The V85 version merged T5 firmwares into a uniformed version which saves time on testing. From the maintenance aspect, it is easier to manage, especially when pushing the upgrade to customers.

05 More Bluetooth Devices Supported



CP700

CP900



Mobile phones



BT Headset

Built-in Bluetooth and Wi-Fi is one of the key features for the Yealink T5 Series phone. From the V85 version, two Bluetooth devices are supported simultaneously. The Yealink speakerphone CP700 & CP900 also works.

New Features



Smart Noise Filtering

The new Smart Noise Filtering feature blocks the noise such as flipping papers and typing when the speaker over the phone is not speaking but making the noise. (Supported models: T5 Series/CP960)

[View Video](#)



Wireless Access Point/Ethernet connection

Android-based phone can act as an access point for mobile devices in the environment without the Wi-Fi network. (Supported models: T58A/T58A with camera/VP59)
Moreover, in the environment of the wireless network, the T5 phone can transfer a Wi-Fi connection to the Ethernet connection. (Supported models: T5 Series, except T53)

[View Video](#)

PSTN

PSTN Connection

Android-based phone can be connected to PSTN (Public Switched Telephone Network) network with the help of CPN10 convertor. (Supported model: T58A/T58A with camera/CP960)

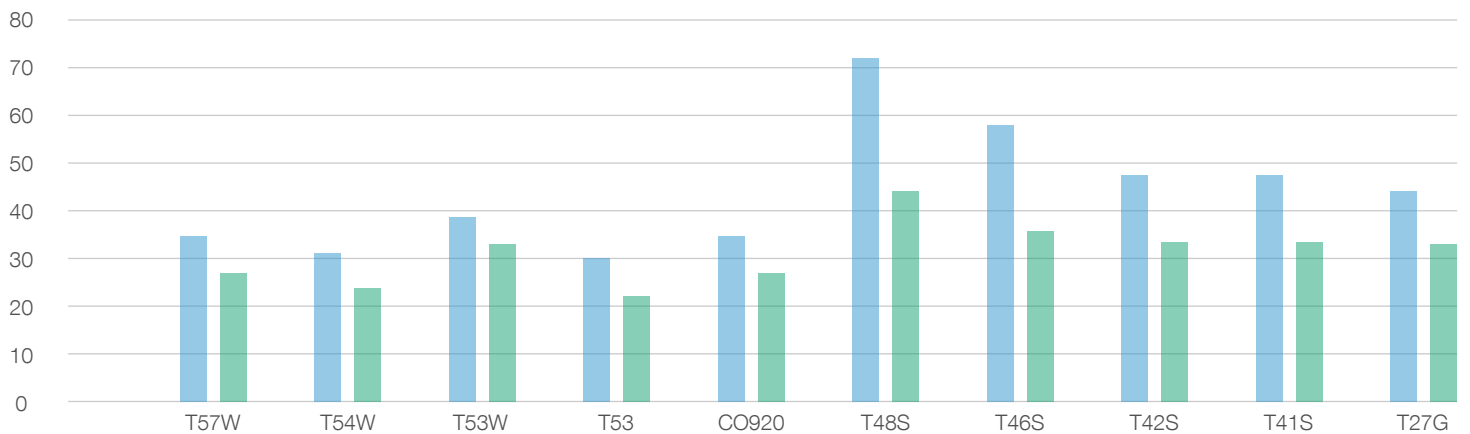


Functional Supported Models

Model	CP960	VP59	T58A	T57W	T54W	T53W	T53	T48S	T46S	T42S	T41S	T27G	CP920
Local Conference	5	10	10	10	10	5	5	3	3	3	3	3	5
T5W Uniform FW				√	√	√	√						
Support PSTN Connection on Android phone	√	√	√										
Wireless AP mode		√	√										
Turn Wi-Fi into Wired network		√	√	√	√	√							
CC phone support CP930W & DD Phone as handset		√	√	√	√	√	√						
PIN Code Provision	√	√	√	√	√	√	√	√	√	√	√	√	√
Caller display showing name card		√	√	√	√								
Forward Recording to server	√	√	√										
Smart Noise Filtering	√	√	√	√	√	√	√						√
Support CP700/CP900		√	√	√	√	√	√						
Support UH36		√	√	√	√	√	√	√	√	√	√		
Connect 2 BT devices		√	√	√	√	√	√						
Out of Service Alert	√	√	√	√	√	√	√	√	√	√	√	√	√
New Language	√	√	√	√	√	√	√	√	√	√	√	√	√
https as default access method	√	√	√	√	√	√	√	√	√	√	√	√	√
Support EHS40			√	√	√	√	√	√	√	√	√		

Boot-up Time Comparison for V84 & V85

■ V84 SP4(s) ■ V85(s)



Model	T57W	T54W	T53W	T53	CP920	T48S	T46S	T42S	T41S	T27G
V84 SP4(s)	34	31	39	30	33	72	58	47	48	44
V85(s)	27	24	33	23	28	44	36	33	33	32