



Yealink Room Control for Q-SYS

SOLUTIONS APPLICATION GUIDE FOR Q-SYS™

Contents

Getting Started	3
Styling Your Own Controls UCI	4
Creating a Certificate	5
Setting up Third-Party Controls with Yealink	6
Viewing Third-Party Controls on the Yealink Controller	7

Before you get started, please ensure that you have the following physical and software components:

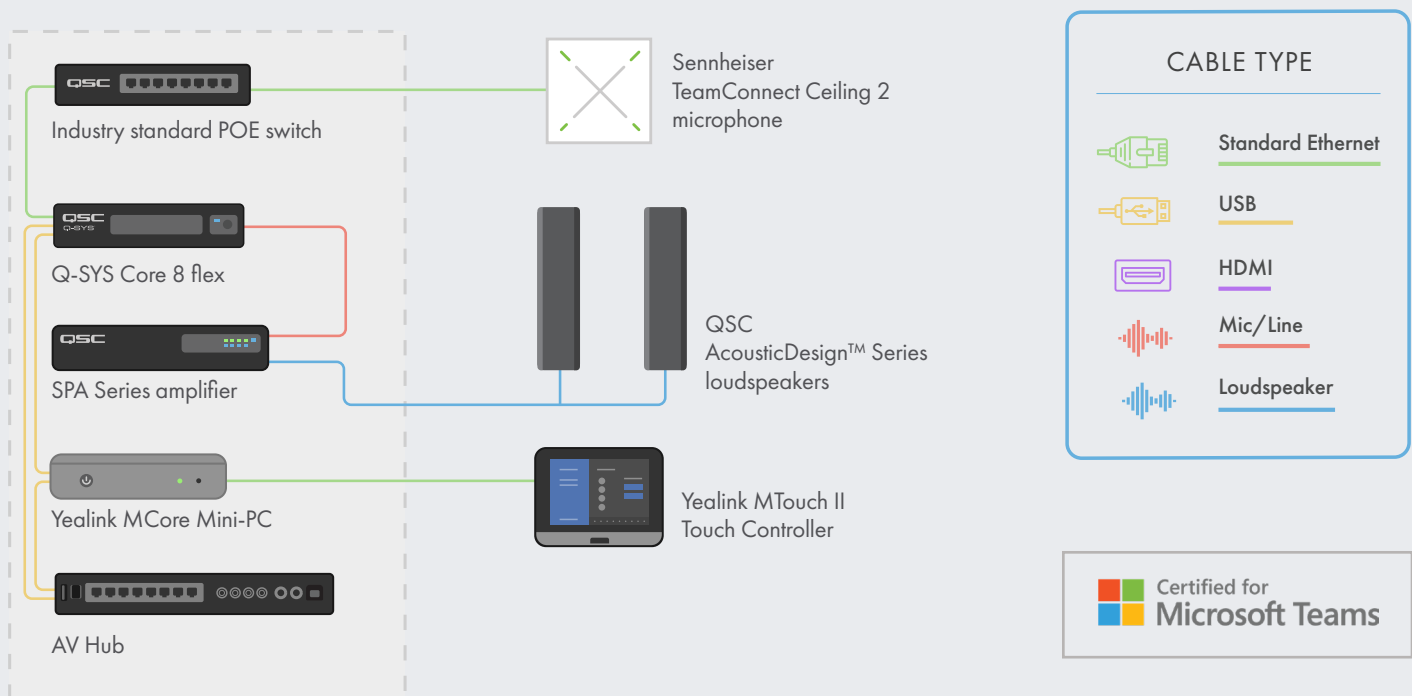
Physical Components:

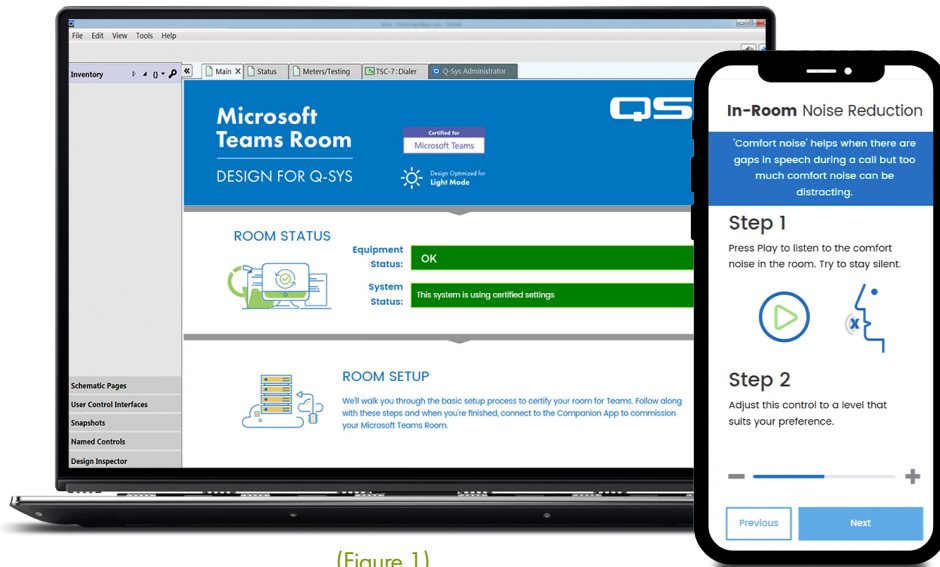
- Yealink MCore Compute and MTouch II Controller
- USB cable connected from the Yealink MCore PC to the Q-SYS Core Processor and/or USB Bridging Endpoint
- Ensure that the Yealink Compute and Q-SYS Core Processor are connected to the same network

Software Components:

- [Q-SYS Designer v9.4+](#)
 - The sample Q-SYS design file for Microsoft Teams Rooms (available in Q-SYS Designer Asset Manager) includes a pre-built Room Controls user control interface (UCI) with the familiar Teams look and feel that can be deployed to your Teams Controller. If you prefer to create your own UCI, the design file also includes a Microsoft Teams CSS style sheet that can be applied to your UCI. (Figure 1)
- [Yealink Teams msi file](#) (minimum version number 2.30.50.0)

Sample System Diagram

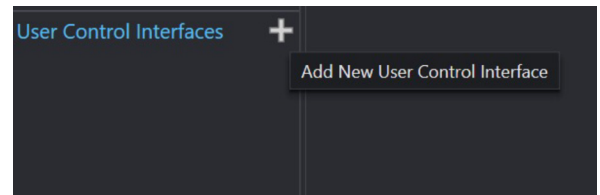




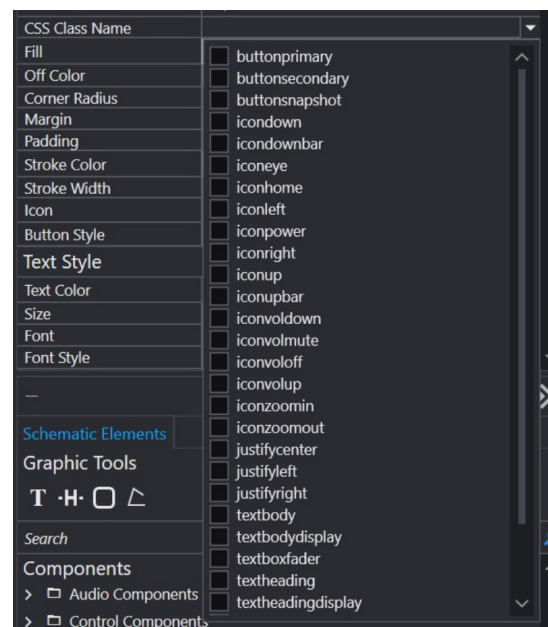
(Figure 1)

Styling Your Own Controls UCI

1. Open Q-SYS Designer Asset Manager.
2. Search for a CSS Style Sheet and Install.
3. Open file explorer and navigate to Documents > QSC > Q-SYS Designer > Assets > qsc-managed-plugins > xxxCSSx.0.0.0 > content.
4. Extract xxx.zip to Documents > QSC > Q-SYS Designer > Styles.
5. Go to Tools > Manage UCI Style and install the Teams Style
6. Create a new UCI and assign it a Panel Type (e.g., Generic 16:9) and select your CSS under the Style. (Figure 2)
7. You can now add components to your UCI and assign them a class by selecting the component and choosing the class(s) under Properties. (Figure 3)



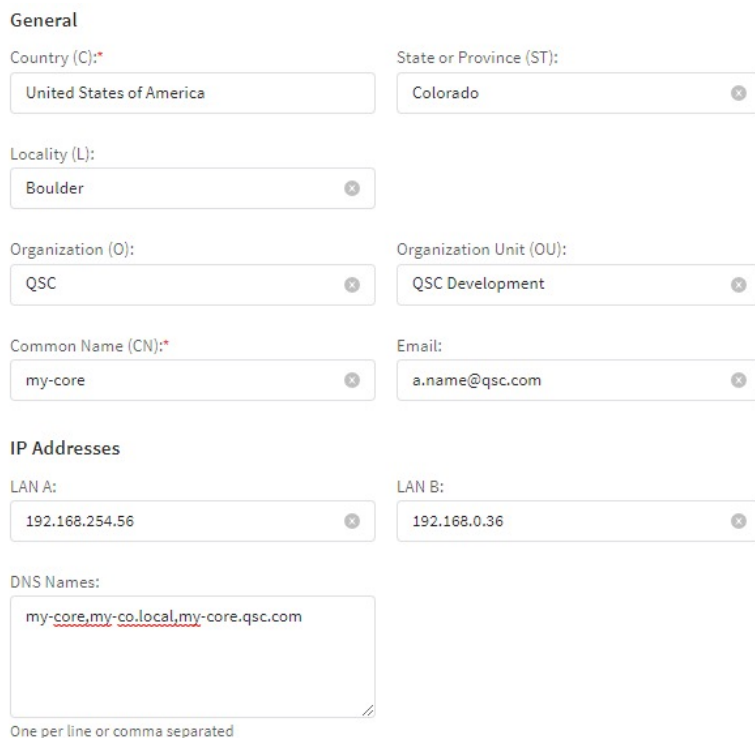
(Figure 2)



(Figure 3)

Creating a Certificate

1. Use a browser to go to the IP address of your Q-SYS Core Processor or click on the "Open Core Manager" link for your processor in Q-SYS Configurator.
2. Ensure that your Q-SYS Core Processor is named how you would like it to be named in Network > Basic > Hostname.
3. Navigate to Network > Date & Time and ensure that the date and time are correctly configured.
4. Navigate to Network > Services and ensure that HTTPS is enabled on the LAN that the Q-SYS Core Processor and Yealink compute device will be connected on together.
5. Navigate to Network > Certificates > Generate CSR
6. Fill out the form, ensuring that you have the correct information.
 - a. IMPORTANT: Unless otherwise specified by your IT team, you MUST include the fully qualified domain name under DNS names, e.g., my-core.qsc.com (Figure 4)
7. Once you have finished filling out the form click the Generate CSR button. Download the file and have an IT Professional create the certificate.
 - a. IMPORTANT: IT Professionals will need to ensure that they change internal DNS to match the DNS names that were entered in the DNS Names field of the CSR form.
8. Once the IT Professional has created the certificate, they should send an encrypted certificate back to you. Go to Network > Certificates > Device Certificate and click "Install Certificate". Paste or upload the certificate and click "Install."
9. Reboot the core. (This step is necessary for the core to complete the certificate installation.)
10. Using a browser, navigate to the full URL of your core, including https:// (<https://my-core.qsc.com>). You should see a secure connection indicator in the browser, next to your URL. If your connection is not secure, work with an IT professional to ensure that the certificate and network environment is setup correctly.



General

Country (C):* State or Province (ST):

Locality (L):

Organization (O): Organization Unit (OU):

Common Name (CN):* Email:

IP Addresses

LAN A: LAN B:

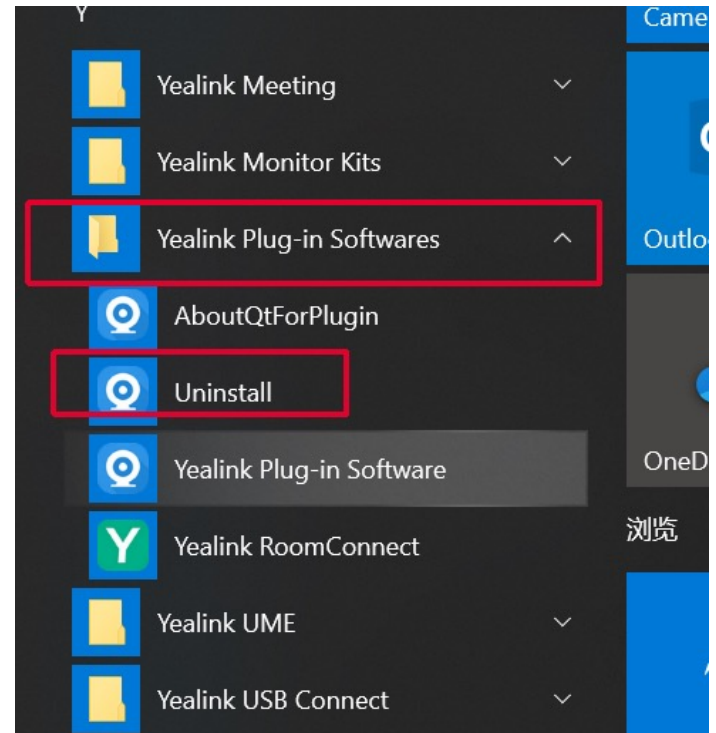
DNS Names:

One per line or comma separated

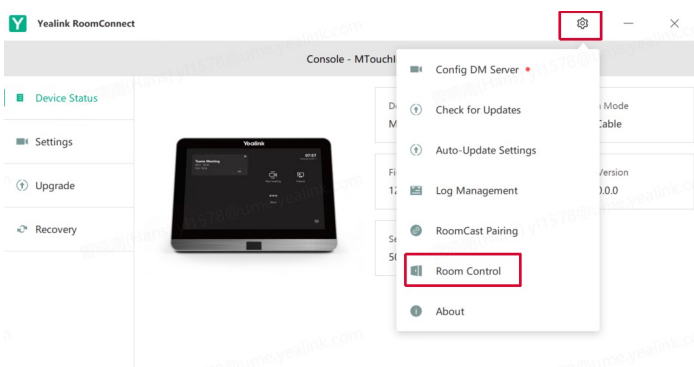
(Figure 4)

Setting up Third-Party Controls with Yealink

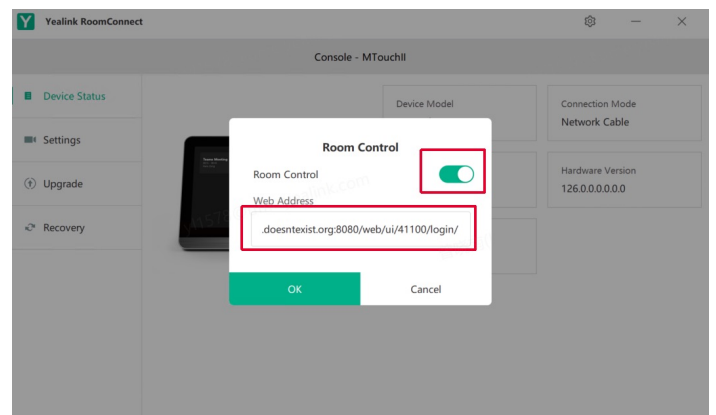
1. If your Yealink Plug-in Software is not 2.30.50.0 or higher, then copy the msi file on your MVC system and install it in the admin account. Copy the msi file on your MVC system and install it in admin account. (Before install it, please uninstall the previous Yealink Room connect software). (Figure 5)
2. In Q-SYS Designer go to Tools > Show Configurator.
3. Click on your Q-SYS Core and press Open Core Manager.
4. Click on the User Control Interfaces tab.
5. Select your UCI and press Open UCI in New Window.
6. Copy the UCI URL from the browser window.
7. Configure the UCI URL in Yealink Room Connect.
 - a. Touch the gear icon and select Room control from the drop down. (Figure 6)
 - b. In the room control pop up slide the switch to the right and paste the URL from Core Manager. (Figure 7)



(Figure 5)



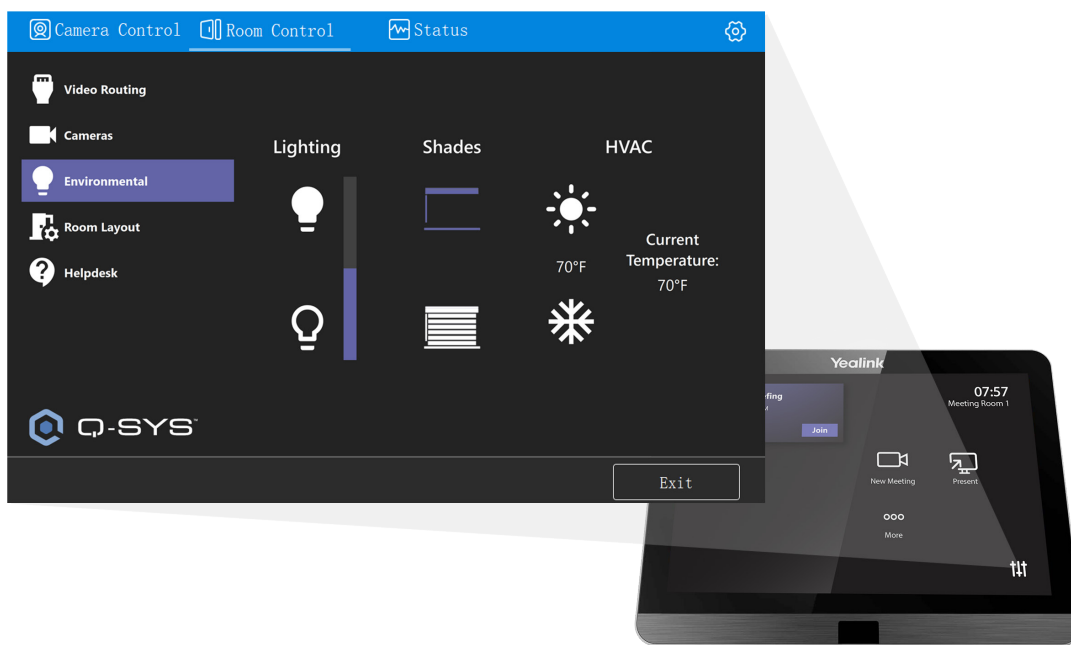
(Figure 6)



(Figure 7)

Viewing Third-Party Controls on the Yealink Controller

1. On the Yealink console press the Room Controls button on the bottom left of the Teams home screen. (Figure 8)
2. On the new page select the Room Control tab.
3. You should see your Q-SYS UCI in the window.



(Figure 8)

Congratulations! You have successfully configured Q-SYS UCI room controls with Yealink!